

Baxter

THE KEY TO UNLOCKING WIDER VIEWS IS TECHNIQUE

Here are some tips on how to operate our latest **Welch Allyn MacroView** Otoscopes.

HOW DO I FOCUS WITH THE MACROVIEW OTOSCOPE?

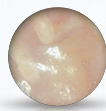
Our latest design incorporates an extended depth of focus and field of clear focus, eliminating the need to adjust focus manually. If you wear glasses, keep them on when you examine to obtain the clearest view.

HOW DO I EXPERIENCE THE LARGER VIEW DURING EXAMS?

Keeping your eye close to the clinician side of the device, an inch or less, helps you realise the 3X wider viewing area. Being further away will reduce the viewing area.

WHAT IF THE VIEW SEEMS BLURRY?

Make sure the ear tip is inserted far enough into the patient's ear canal. Don't let the additional magnification trick you into thinking you wouldn't need to insert the tip as far as you normally would with a lower magnification otoscope.

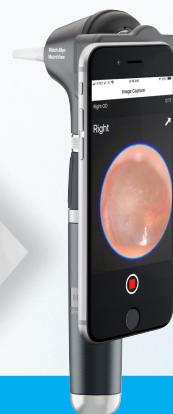


Standard Otoscope

3X LARGER VIEWING AREA
2.5X GREATER MAGNIFICATION



MacroView Otoscope



ADD DIGITAL IMAGE CAPTURE

Our **MacroView Plus** otoscope lets you quickly move from an optical exam to digitally capturing images, expanding your capabilities. With our **iExaminer** System, and free **iExaminer Pro** app, save and share ear images for tracking, trending and easy consultations with specialists.

TO LEARN MORE, VISIT
HILLROM.COM/MACROVIEW-OTOSCOPE-VIDEO

For more information, please contact your Baxter representative or call Baxter Customer Care on 1800 445 576.

ALWAYS READ THE LABEL AND FOLLOW THE DIRECTIONS FOR USE CONTACT YOUR BAXTER REPRESENTATIVE FOR THE LATEST VERSIONS

Baxter reserves the right to make changes without notice in design, specifications and models.

Baxter, Hillrom, iExaminer, MacroView and Welch Allyn are trademarks of Baxter International Inc. or its subsidiaries.

hillrom.com.au

AUTHORISED AUSTRALIAN SPONSOR Welch Allyn Australia Pty. Limited. 1 Baxter Drive, Old Toongabbie NSW 2146.

ANZ-FLC107-230001_r1 12/2023