



Sage[®] Basic Dressing Pack #14

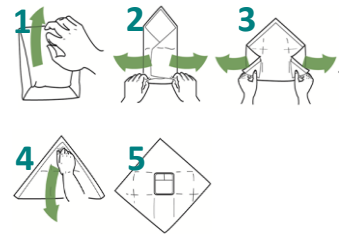
Aaxis Pacific Aseptic Opening Technique

Non touch opening method ensures pack can be opened without compromising the sterile field

Aseptic transfer point permits tray to be moved without compromising sterility

Rigid squish pad area allows excess fluid to be removed from swabs and bobs and be retained in tray corners

Environmentally safe – incineration process converts pack to harmless gasses of oxygen and carbon dioxide



Non Touch Opening Method

Basic Dressing Pack #14

PRODUCT CODE: 11001014

1 x Standard Tray 145 x 130 x 18mm

6 x Non-Woven Swabs 7.5 x 7.5cm 4-Ply

2 x Forceps Green

1 x Forceps Yellow

1 x Towel 2-Ply Paper 42 x 40cm

1 x Field White Plastic 50 x 50cm



PRODUCT CODE	PRODUCT DESCRIPTION	SKU (MOQ)	SKU/ Inner	SKU/ CTN
11001014	Sage [®] Basic Dressing Pack #14 TP AAT Standard, Sterile	140	20	140