

Forté Healthcare

AIRMONTE

Airmonte A8000 Full Replacement Air System



Forte Airmonte A8000

Full Replacement Air System

EVERY PRODUCT
CUSTOM MADE

Value, Intuitive Operation, Full After-Sales Back-up and Support

The Airmonte A8000 Mattress Range embodies elevated levels in powered patient pressure care. Used and trusted in care facilities across Australia, the Airmonte provides a high standard and consistency of care, with a flawless, easy to operate advanced design at excellent value. Key clinical requirements including adjustable cell pressure, alternating/static modes, adjustable comfort level, low air loss, quick-release CPR valves, quality componentry, effortless operation and easy maintenance ensures effectiveness and comfort for patients and support for carers. Select the Airmonte Pressure Care Mattresses and achieve unsurpassed reliability and exceptional care.



EASY TO ACCESS CPR

- ✓ Positioned on air supply tubes
- ✓ Access is not impeded by bed linen or side rails

APPLICATIONS

- ✓ Aged Care
- ✓ Home Care



Specification

CODE	SIZE (MM)
A8000	1980x870x150
EFFECTIVE WEIGHT CAPACITY*	200KG
WARRANTY**	12 MONTH WARRANTY

AVAILABLE COVERS

- ✓ 1. Basic Cover (standard)
- ✓ 2. Combination Pressure Care Cover
- ✓ 3. Premiflex Cover



QUALITY, ERGONOMIC PUMP UNIT

- ✓ Styling is compact and efficient, ergonomically designed with an easy to operate panel
- ✓ Quality componentry
- ✓ Very quiet pump operation

PUMP CONTROL PANEL FUNCTIONS

- ✓ Cell pressure auto-adjusts to exactly suit patient, providing specialised pressure care
- ✓ Cycle time variable – 10, 15, 20, 25 minutes
- ✓ Comfort level adjustable and auto-firm inflation
- ✓ Alternating/static option
- ✓ Auto-adjust seat function for stability when patients are sitting or changing
- ✓ Automatically controls mattress low air-loss feature, removing internal heat entrapment and patient perspiration
- ✓ Low pressure indication & power failure alert
- ✓ Panel lock facility

ALTERNATING CELL CONSTRUCTION

- ✓ 17 interchangeable alternating cells providing excellent pressure re-distribution
- ✓ Patient is supported constantly, simultaneously allowing oxygen flow to all critical areas, preventing and/or healing pressure sores
- ✓ Height of mattress (20.3cm) allows maximum patient immersion for effectiveness and comfort
- ✓ Strengthened flexible TPU construction maintains mattress integrity for longevity and consistency of patient care
- ✓ Light overall weight (9kg) allows ease of set-up and transportation



VENTILATED CELLS

- ✓ 16 ventilated cells in center region optimize micro-climate conditions at the patient interface, reducing excessive heat and moisture



POWER CORD SAFETY RETENTION SYSTEM

- ✓ Integrated loops enable the power cord to be fastened to the side of the mattress
- ✓ Prevents trip hazards and power cord entrapment by adjustable bed surface
- ✓ Press-stud closure allows easy fitment



360° INTEGRATED ZIPPER

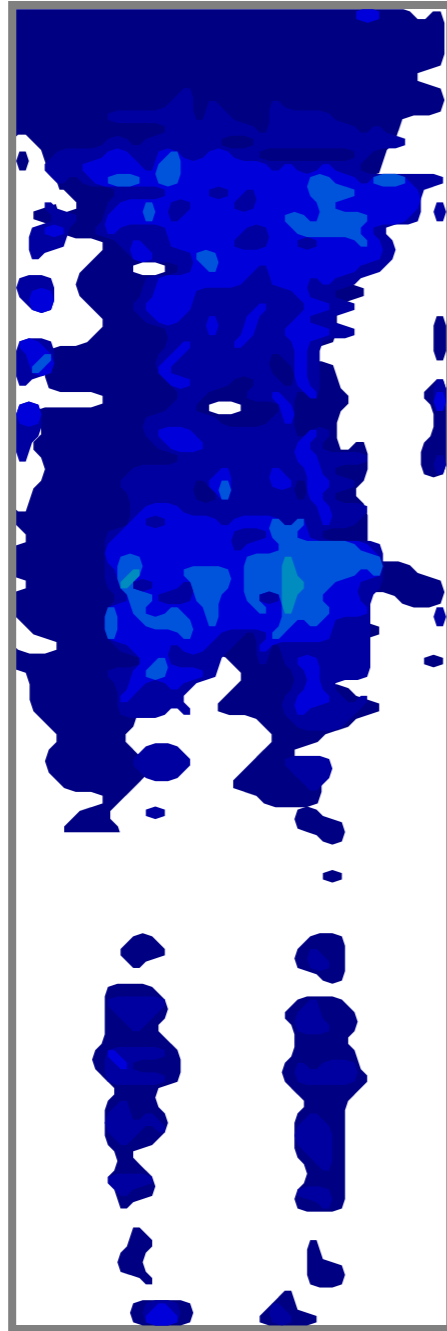
- ✓ Allows full removal of upper cover
- ✓ Facilitates washing/laundry

MODULAR DESIGN

- ✓ Every component is modular and replaceable for low ongoing operational costs
- ✓ 360° Access Zipper for ease of maintenance

CLINICAL PRESSURE ANALYSIS

SUPINE POSITION



NOTES

Subject: 100kg Male
Height: 188cm

Ambient Temperature: 30°C
Average Peak Interface Pressure: 10-25mmHg
Mapping Performed after 6 hours of subject laying on support surface

Sensor Type: Tekscan BPMS, Type 5400D

Bed: Alrick 5500



MEDICAL MATTRESS EXPERTS



P. 1300 73 11 63
W. fortehealthcare.com.au
E. sales@fortehealthcare.com.au